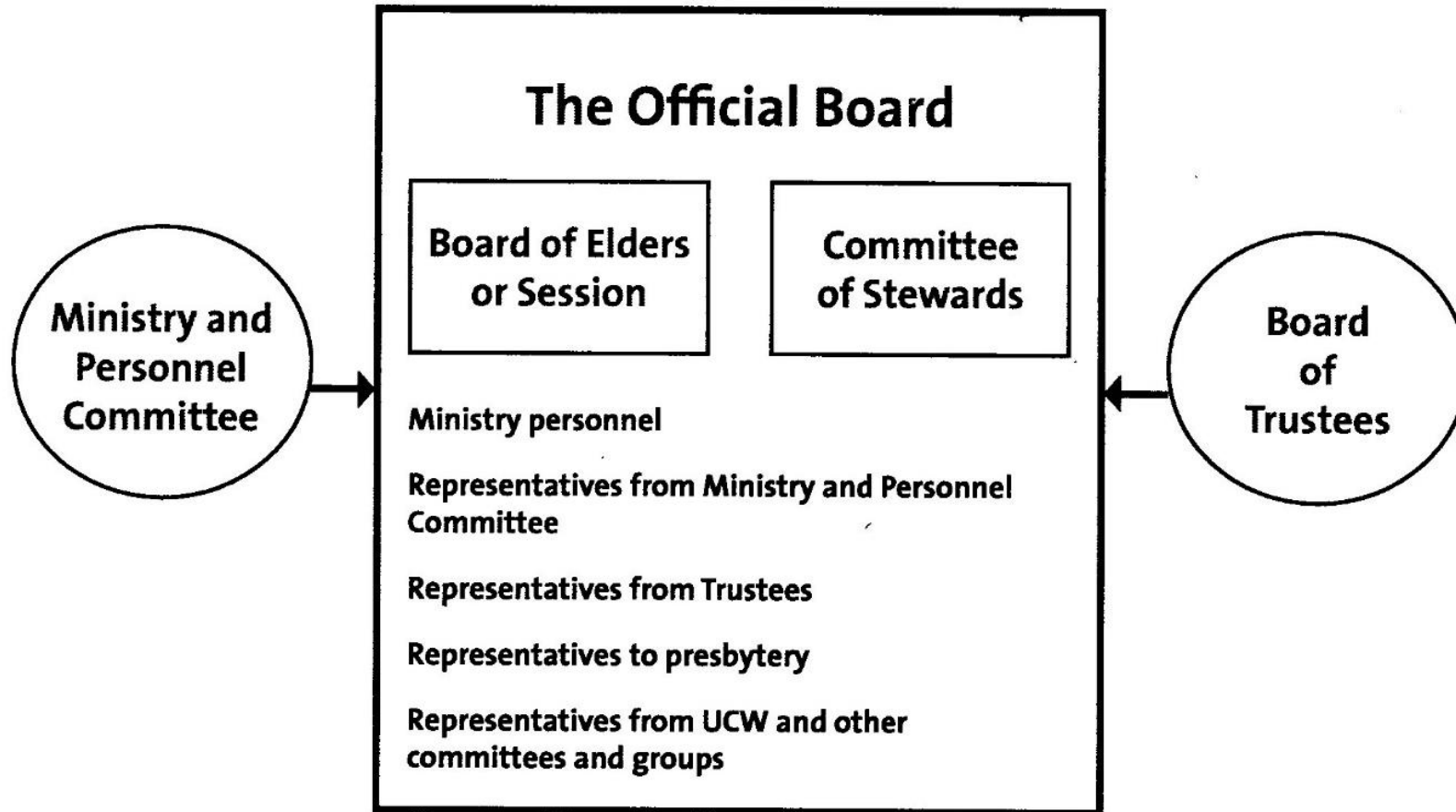


# The Session/Stewards Model



# The Session/Stewards Model

The two primary decision-making groups in this model are:

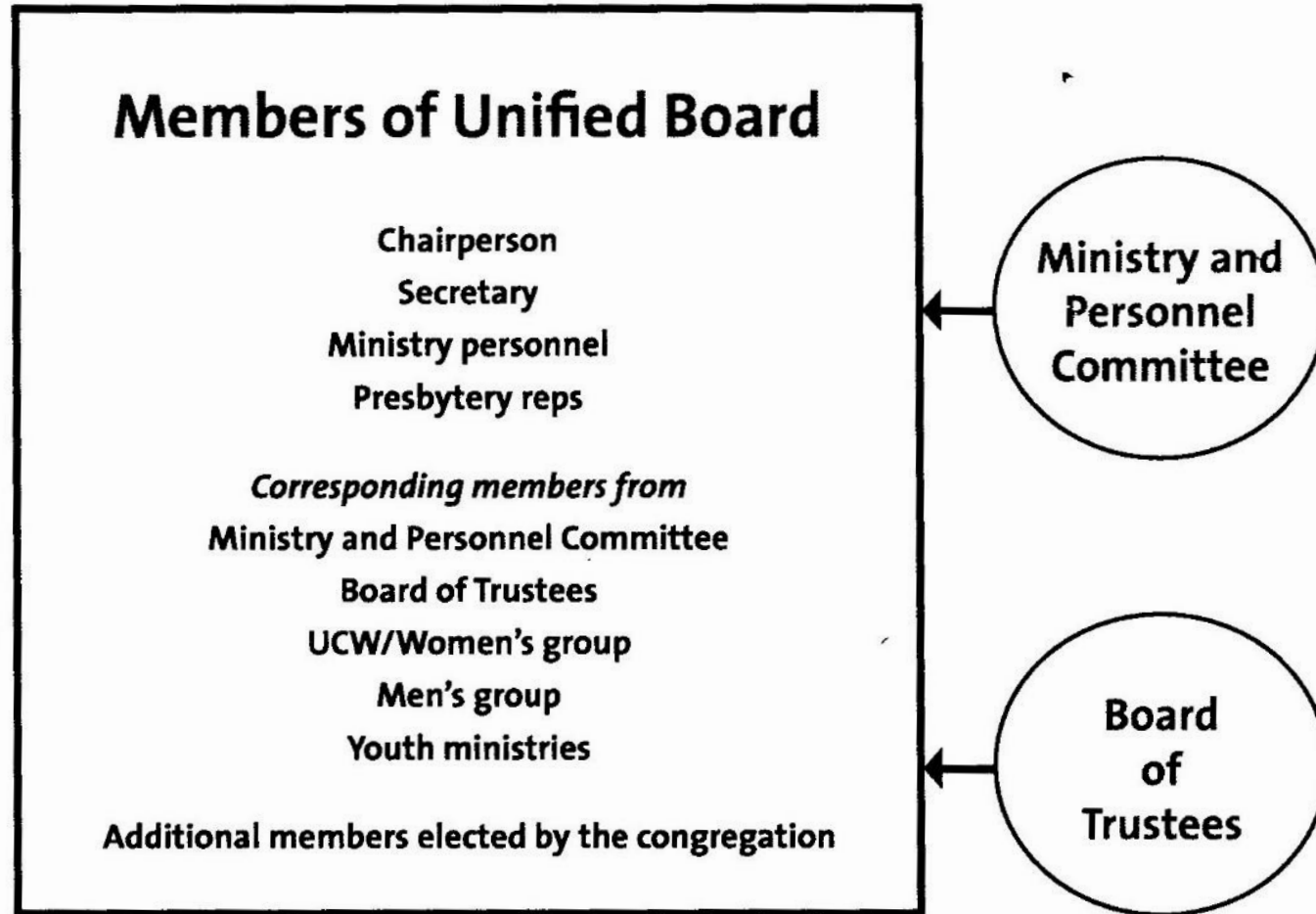
- The Session – responsible for the spiritual leadership of the congregation
- The Committee of Stewards – responsible for the temporal matters of the congregation

Additionally we have the following to make our church function:

- Board of Trustees
- Ministry and Personnel
- Manse Committee
- Secretary for Official Board and Annual Meeting
- Regional Council Representatives
- Sunday School Superintendents
- Nominating Committee
- Mission and Service Enthusiast
- Catering Committee
- Lay Reader Co-ordinator
- Sides Men
- Audiovisual System
- Ushers for Funerals and Special Services
- Weather
- Kitchen Supplies and Lakeland Donation Deliveries

75 people

# The Unified Board Model



# The Unified Board Model

Chairperson

Secretary

Ministry personnel

Presbytery reps

Corresponding members from:

Ministry and Personnel Committee

Board of Trustees

UCW/Women's group

A treasurer is elected from among the members of the Church Board

Additional members elected by the congregation

10-12 people

# The Unified Board Model

We will no longer have:

30 people

- Session
- Manse Committee
- Committee of Stewards
- Catering as a standing committee but called by the Board as needed

We will still need the following functions

- Catering
- Sunday School Superintendent
- Organist
- Choir Director
- Mission and Service Enthusiast
- Lay Reader Co-ordinator
- Sides Men
- Audiovisual System
- Ushers for Funerals and Special Services
- Weather Notification
- Kitchen Supplies and Lakeland Donation Deliveries

24 people